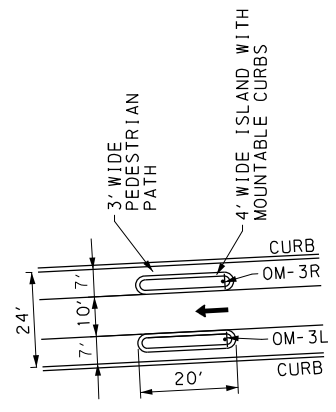
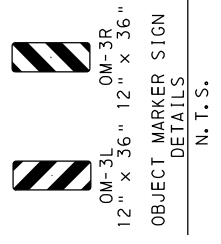


NOTE: SEE SHEET 5 FOR INTERSECTION SIGNAGE.



DUBLIN ST.  
 PINCH POINT DETAIL  
 N. T. S.



OM-3L 12" x 36" 12" x 36"  
 OM-3R 12" x 36" 12" x 36"  
 OBJECT MARKER SIGN  
 DETAILS  
 N. T. S.



LEGEND  
 POST MOUNTED SIGN  
 TRAFFIC FLOW

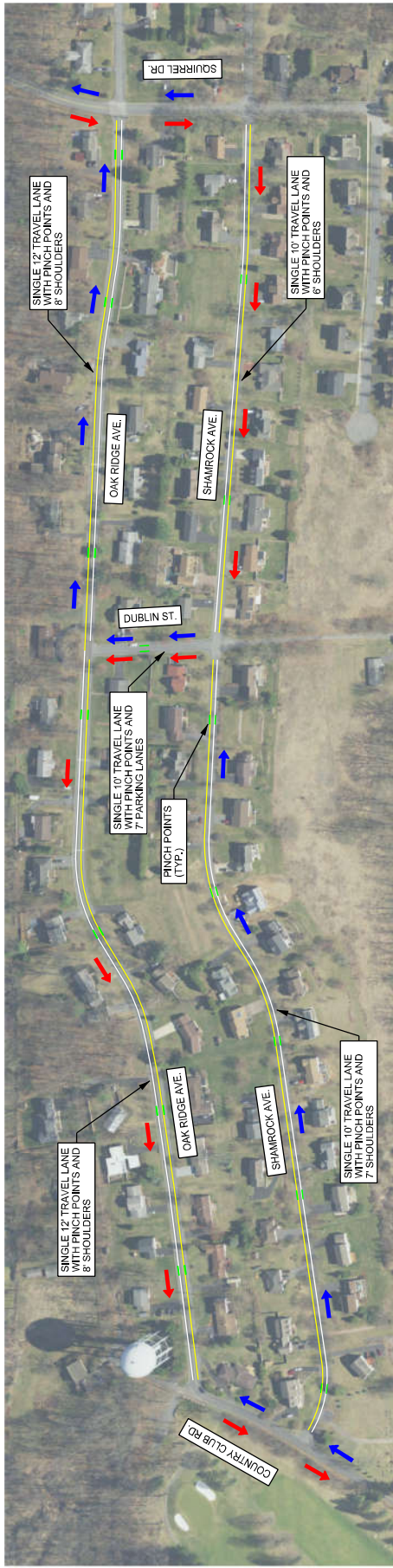


SCALE: 1" = 250'

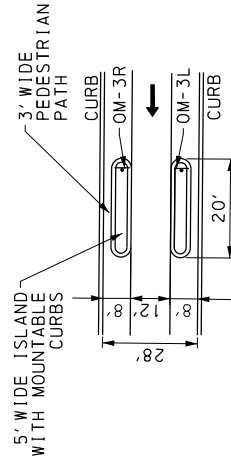
**Trans**  
 ASSOCIATES  
 Small Firm Client Experience, Big Firm Capabilities  
 4955 Steubenville Pike, Twin Towers Suite 400  
 Pittsburgh, Pennsylvania 15205, 412-490-0630

PROJECT NO. COLLEID - 20198  
 PROJECT: Oak Ridge Traffic Calming  
 TITLE: Option 3a  
 One-Way Streets, Single Lanes,  
 and Wide Shoulders

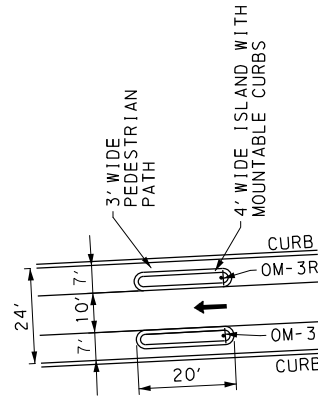
FIGURE 1  
 D.B. Job  
 C.R. Job  
 REV. 9821



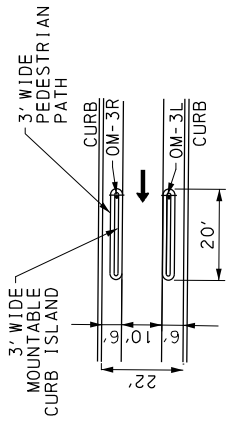
NOTE: SEE SHEET 5 FOR INTERSECTION SIGNAGE.



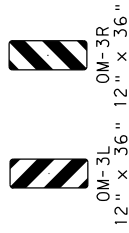
OAK RIDGE AVE. (NORTH)  
PINCH POINT DETAIL  
N. T. S.



DUBLIN ST. AND SHAMROCK AVE. (SOUTH)  
PINCH POINT DETAIL  
N. T. S.



SHAMROCK AVE. (NORTH)  
PINCH POINT DETAIL  
N. T. S.



OBJECT MARKER SIGN  
DETAILS  
N. T. S.



SCALE: 1" = 250'



Trans ASSOCIATES  
Small Firm Client Experience, Big Firm Capabilities  
4955 Steubenville Pike, Twin Towers Suite 400  
Pittsburgh, Pennsylvania 15205, 412-490-0630

PROJECT NO. COLLEID - 20198

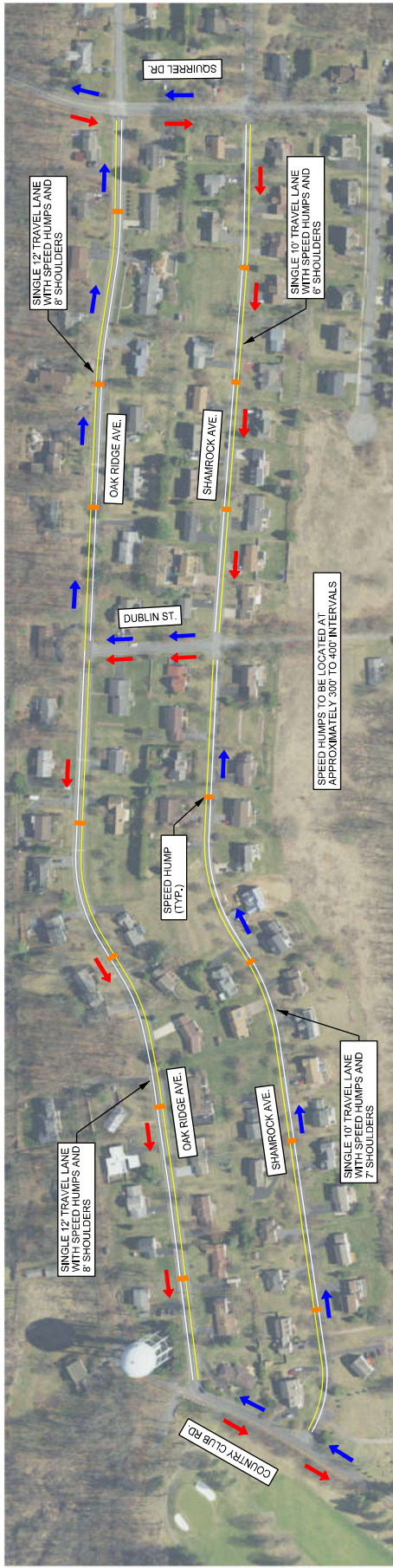
PROJECT: Oak Ridge Traffic Calming

TITLE: Option 3b  
One-Way Streets and  
Intermittent Pinch Points

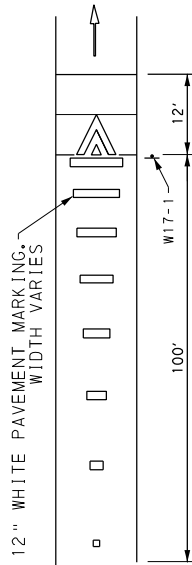
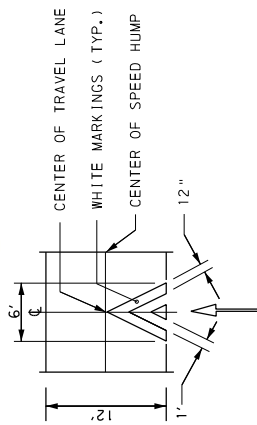
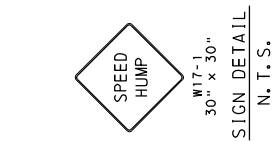
FIGURE

2

D.B. Job  
C.R. Job  
REV. 9821

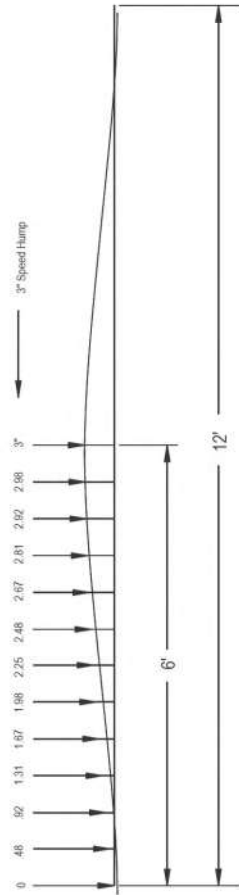


NOTE: SEE SHEET 5 FOR INTERSECTION SIGNAGE.



TYPICAL PAVEMENT MARKINGS AND SIGNS FOR SPEED HUMPS

N. T. S.



Source: ITE, Guidelines for the Design and Application of Speed Humps

SPEED HUMP PROFILE  
N. T. S.



SCALE: 1" = 250'



Small Firm Client Experience, Big Firm Capabilities  
4955 Steubenville Pike, Twin Towers Suite 400  
Pittsburgh, Pennsylvania 15205, 412-490-0630

PROJECT NO. COLLEID - 20139  
PROJECT: Oak Ridge Traffic Calming

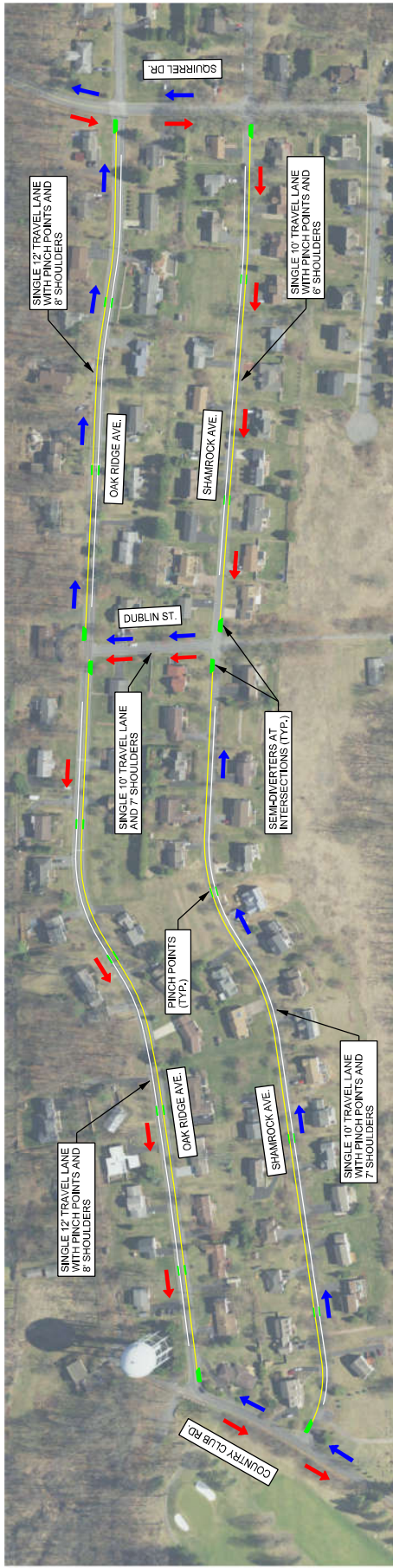
TITLE: Option 3c

One-Way Streets and Speed Humps

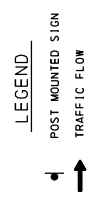
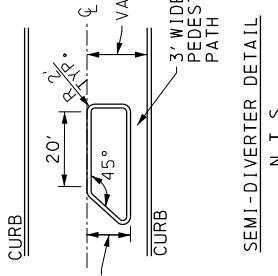
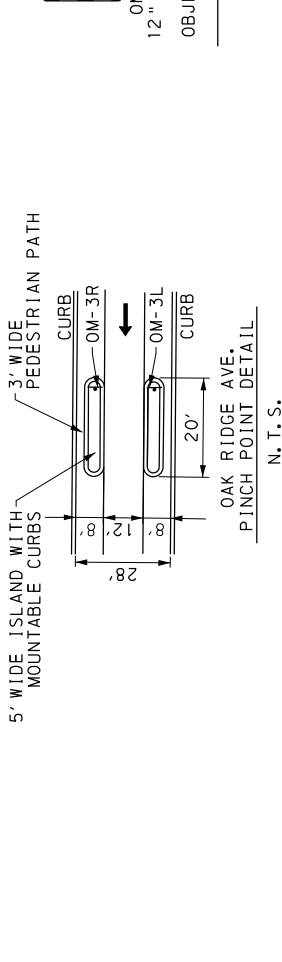
FIGURE

3

D.B. Job  
C.R. Job  
REV. 9821



NOTE: SEE SHEET 5 FOR INTERSECTION SIGNAGE.

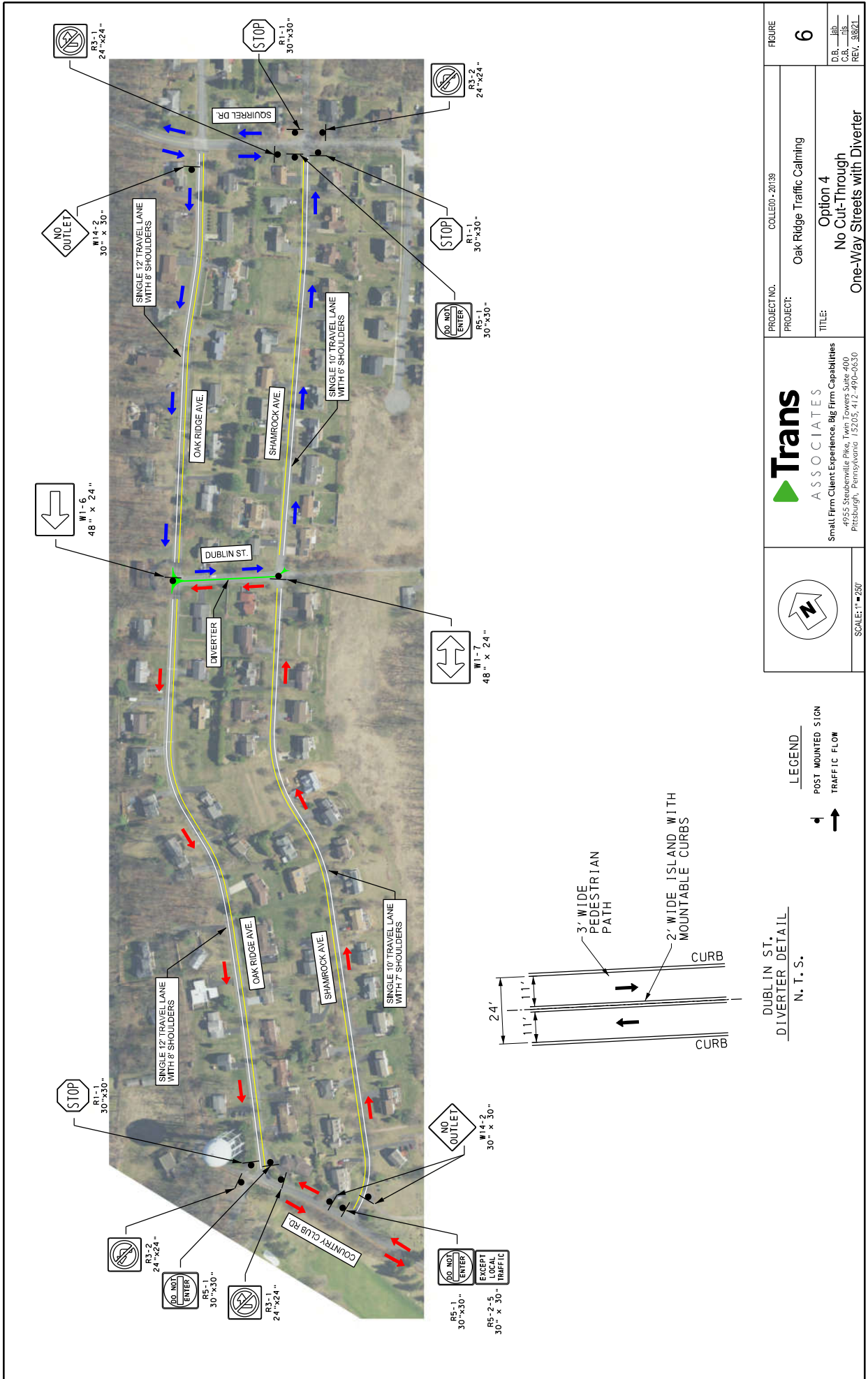


**Trans ASSOCIATES**  
Small Firm Client Experience, Big Firm Capabilities  
4955 Steubenville Pike, Twin Towers Suite 400  
Pittsburgh, Pennsylvania 15205, 412-490-0630

PROJECT NO. COLLEID-20198  
PROJECT: Oak Ridge Traffic Calming  
TITLE: Option 3d Lane Closures and Intermittent Pinch Points

FIGURE 4

D.R.	Jab
C.R.	Jab
REV.	9821



DUBLIN ST.  
DIVERTER DETAIL  
N. T. S.

LEGEND  
 POST MOUNTED SIGN  
 TRAFFIC FLOW



SCALE: 1" = 250'

**Trans**  
 ASSOCIATES  
 Small Firm Client Experience, Big Firm Capabilities  
 4955 Steubenville Pike, Twin Towers Suite 400  
 Pittsburgh, Pennsylvania 15205, 412-490-0630

PROJECT NO.	COLLEID - 20198
PROJECT:	Oak Ridge Traffic Calming
TITLE:	Option 4 No Cut-Through One-Way Streets with Diverter

FIGURE	6
D.B. Job	
C.R. Job	
REV.	9821

